



**MOHAWK VALLEY HEALTH SYSTEM
PRESS RELEASE AND MEDIA EVENT**

October 26, 2018
Utica, NY

AGENDA

1. INTRODUCTION
2. MAJOR PROJECT MILESTONES
3. COLLABORATIVE PROCESS
4. COMMUNITY INPUT
5. SITE PLANNING
6. EXTERIOR DESIGN: PROCESS AND IMAGES

MAJOR PROJECT MILESTONES

MAJOR PROJECT MILESTONES

<p>MVHS announces it is exploring opportunities to fund and build a new, combined hospital for the community.</p>		<p>The NYS Budget is approved and includes the \$300M for the new MVHS hospital. MVHS continued to work with NYS to receive the application for the funding.</p>		<p>NYS Legislature approves the \$300M for the 2016 budget.</p>		
<p>2014 NOV</p>	<p>JAN</p>	<p>2015 APR</p>	<p>SEP</p>	<p>2016 MAR</p>	<p>NOV</p>	
		<p>Governor Cuomo : As part of his proposed \$700M pledge to support Upstate New York hospitals, \$300M would help to “create an integrated healthcare delivery system in Oneida County.”</p>		<p>MVHS announces downtown Utica as the location for the new hospital.</p>		<p>MVHS receives Request for Application (RFA) from NYS and has until the end of January 2017 to submit it.</p>

MAJOR PROJECT MILESTONES

		<p>The New York State Department of Health (NYSDOH) announced that MVHS was the recipient of the \$300M Health Care Facility Transformation grant.</p>		<p>MVHS and design team conduct over 90 user meetings and 100 community meetings to develop the schematic design of the new hospital.</p>	<p>MVHS submits Certificate of Need Application.</p>
<p>2017</p>	<p>JAN</p>	<p>APR</p>	<p>MAY</p>	<p>JUN</p>	<p>NOV</p>
	<p>MVHS submits RFA; holds Community Forums; announces the selection of the architectural and construction firms; announces Memorandum of Understanding with Masonic Labs.</p>		<p>Architects, including the urban planner from NBBJ, in collaboration with the MVHS outreach team, begin conducting meetings to gather input and advance the site plan and design for the new regional healthcare campus.</p>		

MAJOR PROJECT NEXT STEPS



COLLABORATIVE PROCESS

PROJECT VISION STATEMENT

To create an advanced healthcare campus for MVHS through design that promotes the health of patients, optimizes the work environment for caregivers, and serves as a catalyst for the revitalization of downtown Utica.

Utica City Residents

over

100

Community Meetings

Mohawk Valley Health System

over

155

User Group Meetings Conducted

over

2000

Community Members Involved

over

378

Staff Involved

- Physicians
- Clinicians
- Non-Clinical Staff
- Technicians
- Staff Support

User Groups



Process Discussion



Department Flows



Program Adjacencies



Mock-up Rooms



COMMUNITY INPUT

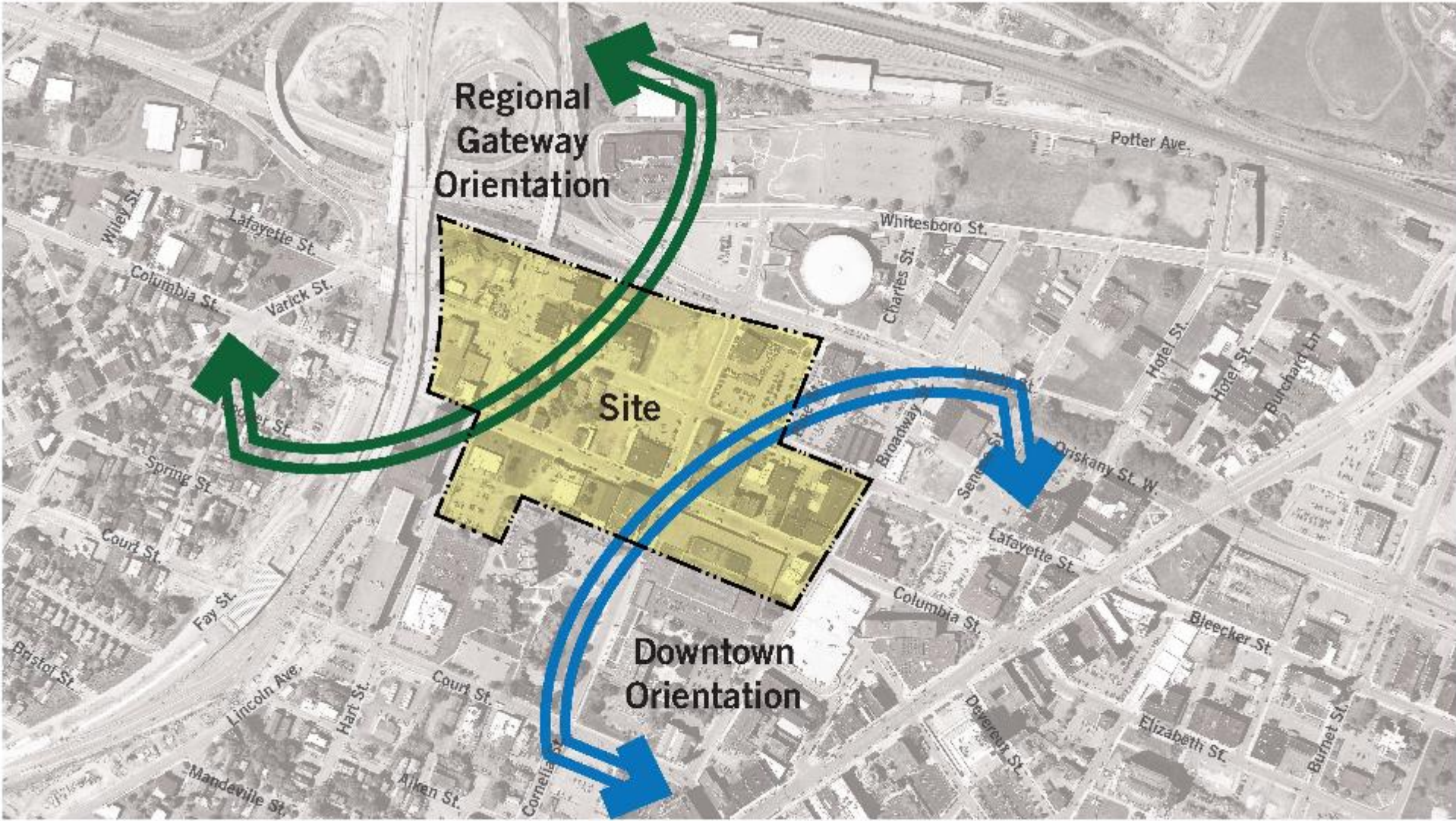
GUIDING PRINCIPLES

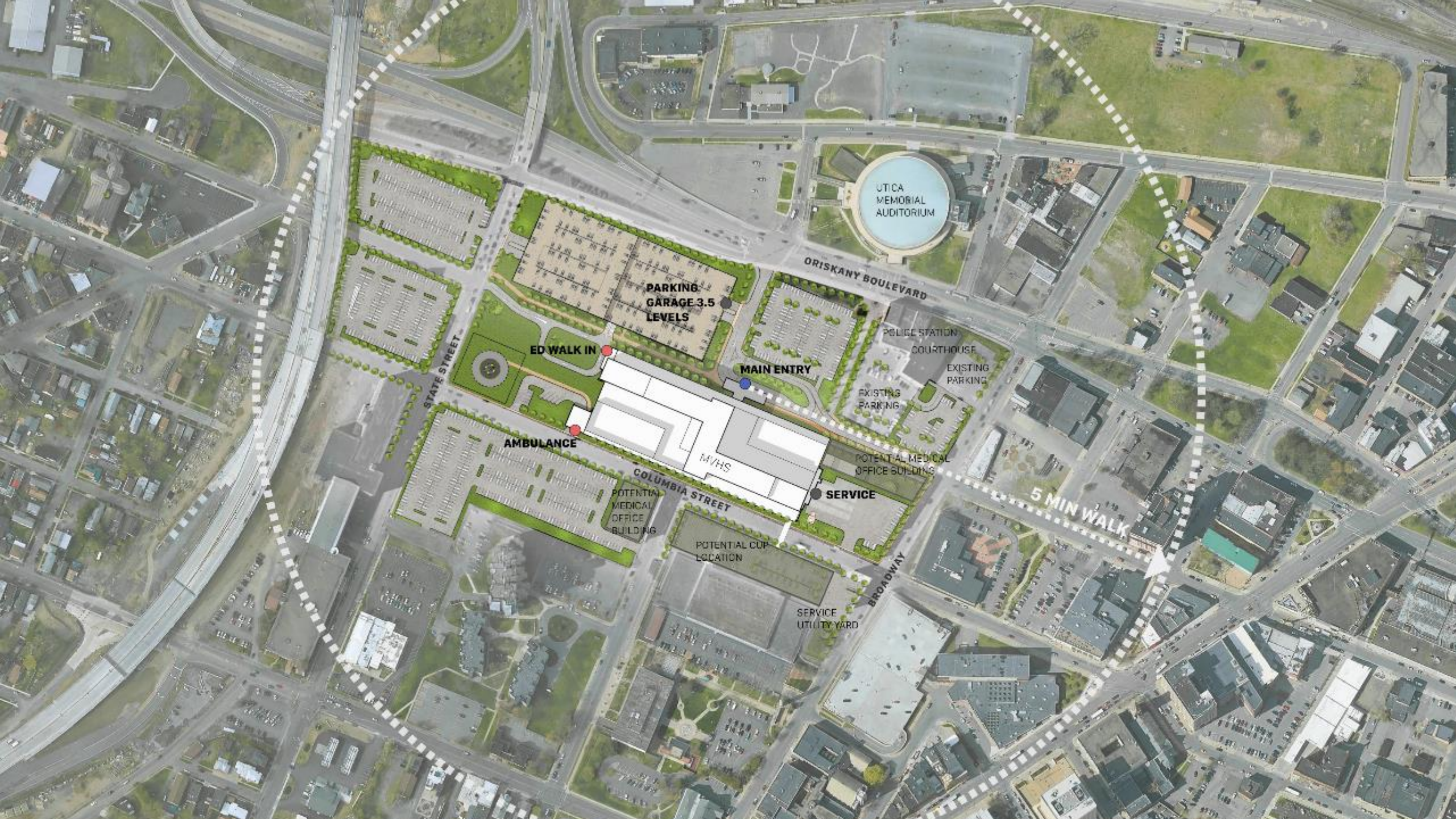
Here is a list of priorities brought forth by the community for the new hospital project:

Augment City Vibrancy	Utilize Green Space	Support Urban Growth
Respond To Utica's History		
Encourage Business	Promote A Parking Plan	Respect The Street Grid
Designed For Views		Connect Neighborhoods
Enhance Neighborhood Aesthetic	Allow Transportation Alternatives	Benefit Utica's Skyline
	Consider Traffic Flow	Design for all 4 Seasons

SITE PLANNING

SITE ORIENTATION





UTICA MEMORIAL AUDITORIUM

ORISKANY BOULEVARD

PARKING GARAGE 3.5 LEVELS

ED WALK IN

MAIN ENTRY

POLICE STATION

COURTHOUSE

EXISTING PARKING

EXISTING PARKING

AMBULANCE

M/HS

SERVICE

POTENTIAL MEDICAL OFFICE BUILDING

5 MIN WALK

COLUMBIA STREET

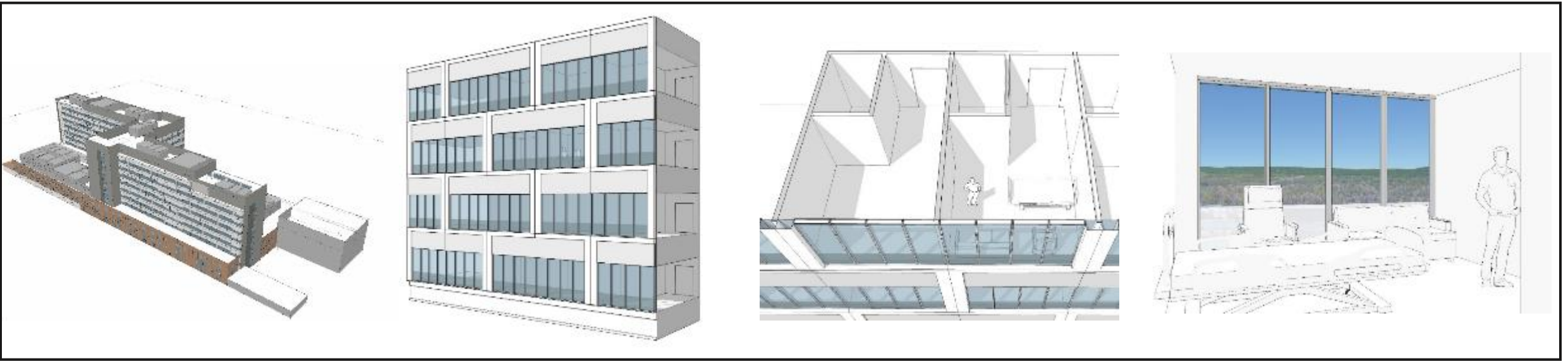
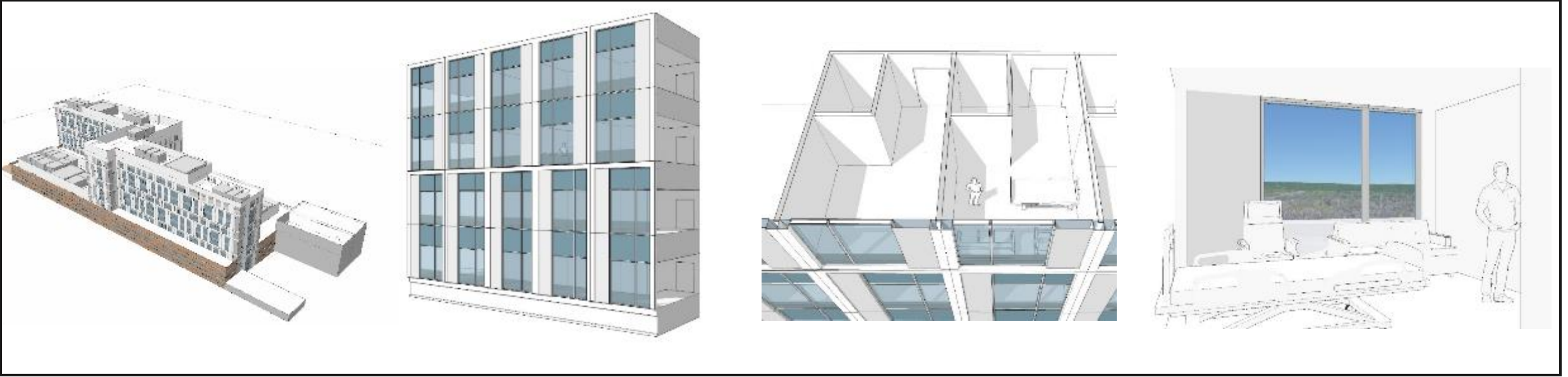
POTENTIAL COP LOCATION

SERVICE UTILITY YARD

BROADWAY

EXTERIOR DESIGN PROCESS

BUILDING ARTICULATION STUDIES



BUILDING ARTICULATION STUDIES



FAÇADE MATERIAL STUDIES

BRICK



TERRACOTTA



PRECAST



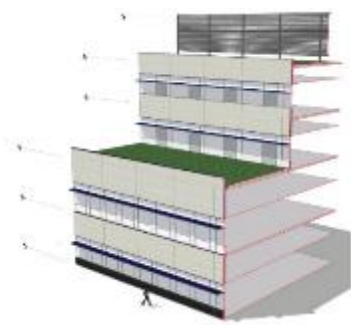
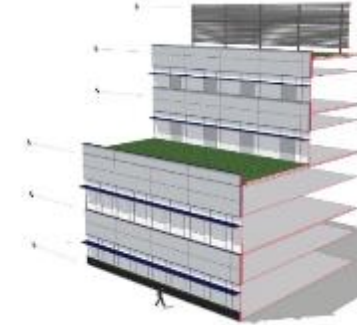
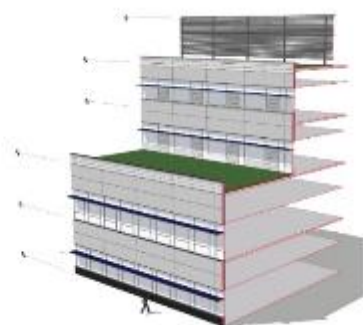
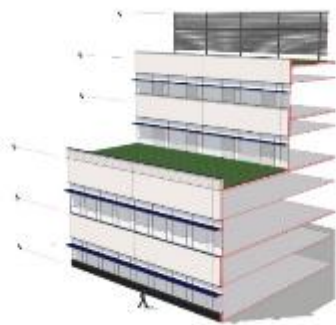
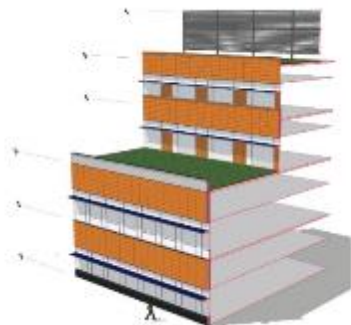
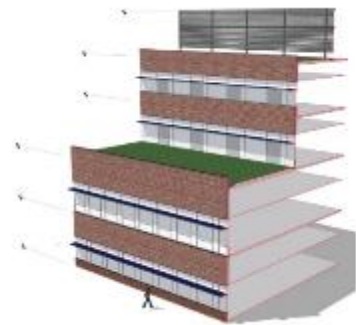
GFRG



METAL PANEL



CEMENT PLASTER



FAÇADE MATERIAL STUDIES

BRICK



TERRACOTTA



PRECAST



GFRG



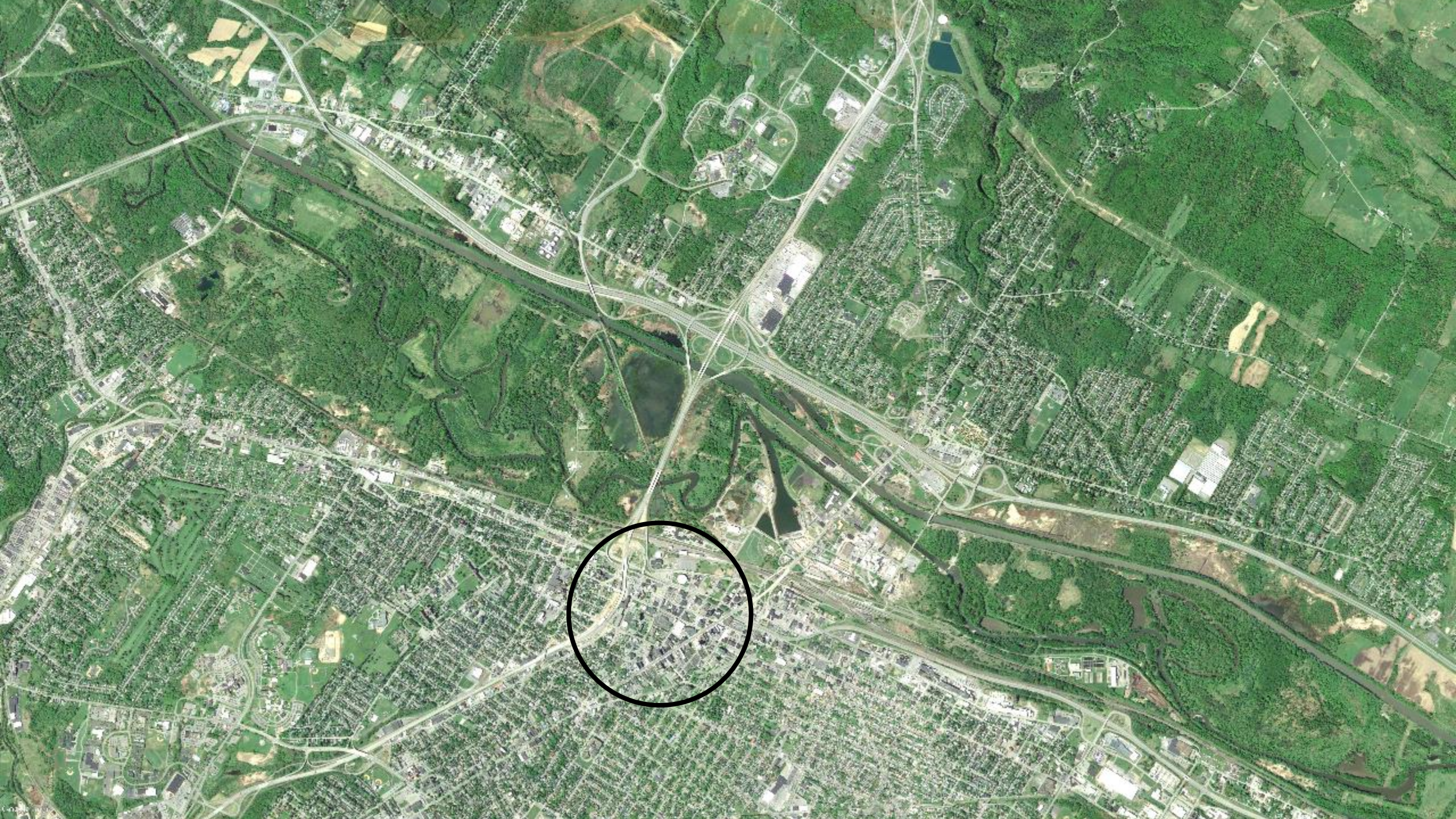
METAL PANEL



CEMENT PLASTER



WALL TYPE	DESCRIPTION	COST	WEIGHT	PERFORMANCE		WARRANTY	MAINTENANCE	
				WATER	THERMAL		CLEANING	REPAIR/REPLACE
ARTICULATED, INSULATED PRECAST CONCRETE	INSULATED TO R 19 VALUE. 4 INCH ARTICULATION ON OUTSIDE FACE	\$\$\$\$	####	2 STAGED SEALANT JOINTS OFFER 2 LAYERS OF DEFENSE	INSULATION AT THE OUTER EDGE OF SYSTEM	50+ YEARS	CLEAN WITH WATER EVERY 4 YEARS.	3- REPLACE DUAL STAGE SEALANT JOINTS EVERY 20-30 YRS.
INSULATED PRECAST CONCRETE	INSULATED TO R 19 VALUE. NO ARTICULATION	\$\$\$	###	2 STAGED SEALANT JOINTS OFFER 2 LAYERS OF DEFENSE	INSULATION AT THE OUTER EDGE OF SYSTEM	50+ YEARS	CLEAN WITH WATER EVERY 4 YEARS.	3- REPLACE DUAL STAGE SEALANT JOINTS EVERY 20-30 YRS.
FIBER - CEMENT	INSULATED TO R 20 VALUE.RAINSCREEN*	\$\$	##	RAINSCREEN SYSTEM (NOT PRESSURE EQUALIZED) OFFERS 2 LAYERS OF DEFENSE	INSULATION OUTBOARD OF FRAMING	15+ YEARS		PANELS RELATIVELY EASY TO REPLACE
FORMED METAL PANEL	INSULATED TO R 20 VALUE.RAINSCREEN*	\$\$	##	RAINSCREEN SYSTEM (NOT PRESSURE EQUALIZED) OFFERS 2 LAYERS OF DEFENSE	INSULATION OUTBOARD OF FRAMING	20+ YEARS	CLEAN WITH WATER WHEN WASHING WINDOWS	PANELS RELATIVELY EASY TO REPLACE
COMPOSITE METAL PANEL	INSULATED TO R 20 VALUE.RAINSCREEN*	\$\$	##	RAINSCREEN SYSTEM (NOT PRESSURE EQUALIZED) OFFERS 2 LAYERS OF DEFENSE	INSULATION OUTBOARD OF FRAMING	20+ YEARS	CLEAN WITH WATER WHEN WASHING WINDOWS	PANELS RELATIVELY EASY TO REPLACE
INSULATED METAL PANEL	INSULATED TO R 20 VALUE.RAINSCREEN*	\$\$	##	JOINT CHAMBER CREATES A PRESSURE EQUALIZED SYSTEM.	INSULATION OUTBOARD OF FRAMING, INTEGRAL TO PANEL	20+ YEARS	CLEAN WITH WATER WHEN WASHING WINDOWS	PANELS RELATIVELY EASY TO REPLACE
EXTERIOR INSULATED AND FINISH SYSTEM	INSULATED TO R 20 VALUE.	\$	#	DRAINABLE SYSTEM. SECONDARY DRAINAGE OFFERS 2 LAYERS OF DEFENSE	INSULATION OUTBOARD OF FRAMING	10+ YEARS	CLEAN WITH WATER AND REPAINT EVERY 4-5 YEARS	SUBJECT TO CRACKING IF NOT JOINTED PROPERLY, FIELD REPAIR EASY TO DO
INSULATED CEMENT PLASTER SYSTEM	INSULATED TO R 20 VALUE.**	\$	#	DRAINABLE SYSTEM. SECONDARY DRAINAGE OFFERS 2 LAYERS OF DEFENSE	INSULATION OUTBOARD OF FRAMING, INTEGRAL TO PANEL	10+ YEARS	CLEAN WITH WATER AND REPAINT EVERY 4-5 YEARS	SUSCEPTABLE TO IMPACT DAMAGE, BUT EASY TO REPAIR







Connecting Character to Context



Honoring Utica's Rich History

Embracing Utica's Innovation-Driven





Historical Precedents

- **Expression:** Sensitivity to context
- **Material / Color:** Brick. Warm Coloration
- **Craftsmanship:** via masonry detail



Contemporary Precedents

- **Expression:** Precision medicine and clinical excellence
- **Material / Color:** Metal & Glass. Cool Coloration
- **Craftsmanship:** via machine-like aesthetic

Historical

Expression: Sensitivity to context

Material / Color: Brick. Warm Coloration

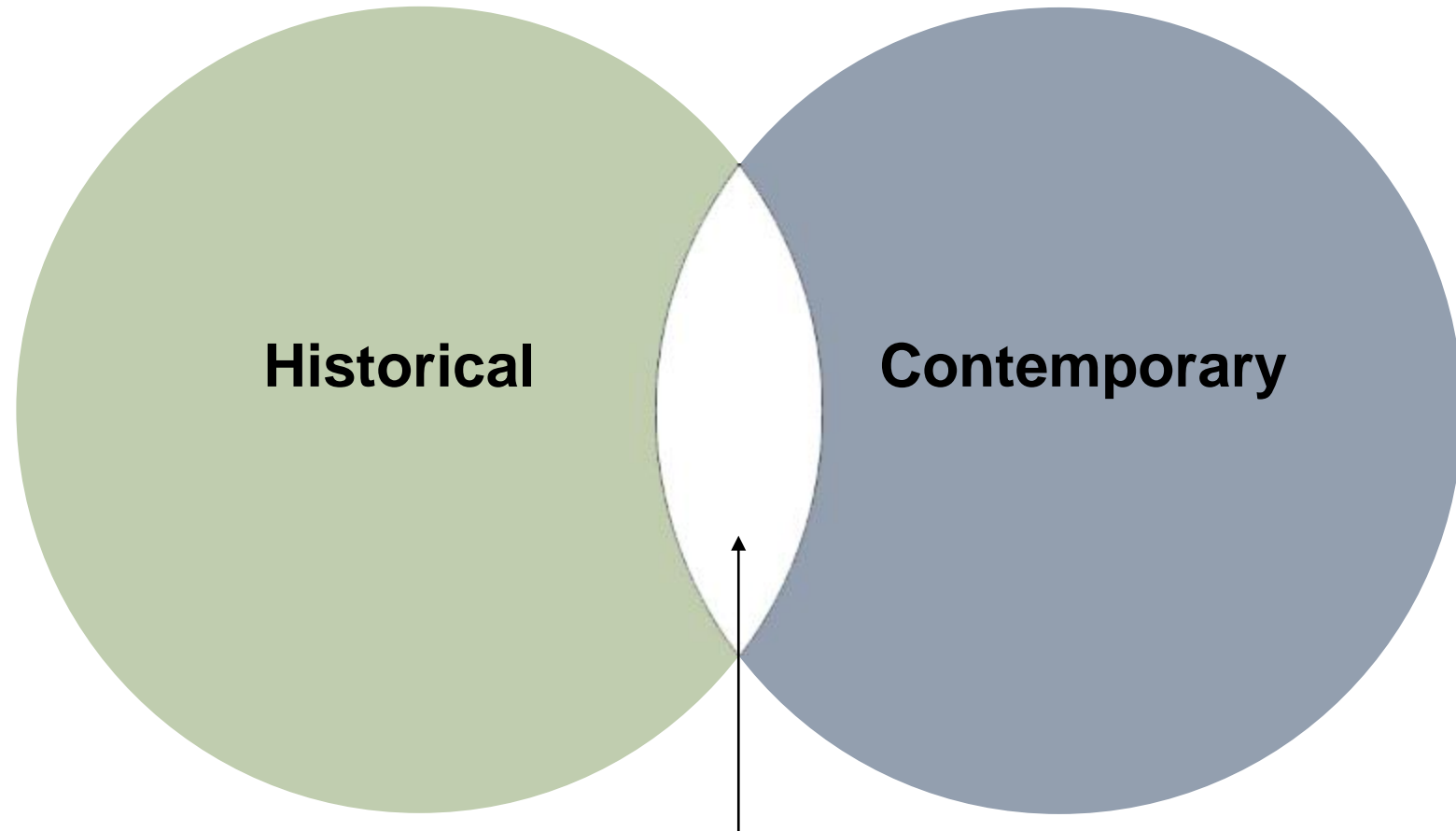
Craftsmanship: via masonry detail

Contemporary

Expression: Precision medicine & clinical excellence

Material / Color: Metal & Glass. Cool Coloration

Craftsmanship: via machine-like aesthetic



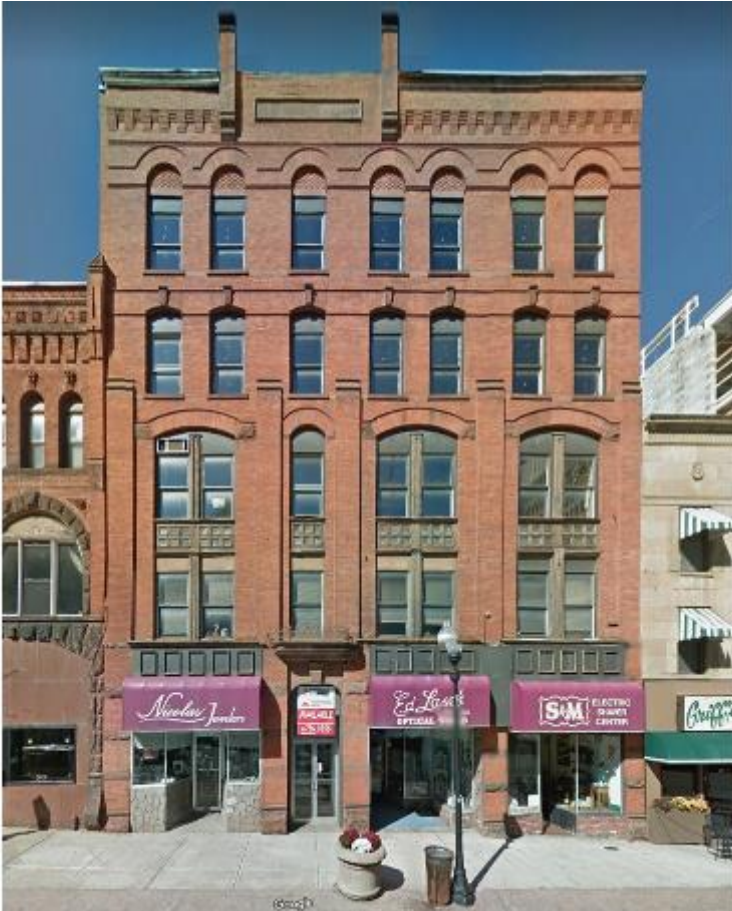
Goal: An exterior expression that respects the rich history of Utica and complements the surrounding neighborhoods, while projecting a sense of clinical excellence through rigorous detailing and craftsmanship.

UNDERSTANDING UTICA'S RICH ARCHITECTURAL HERITAGE

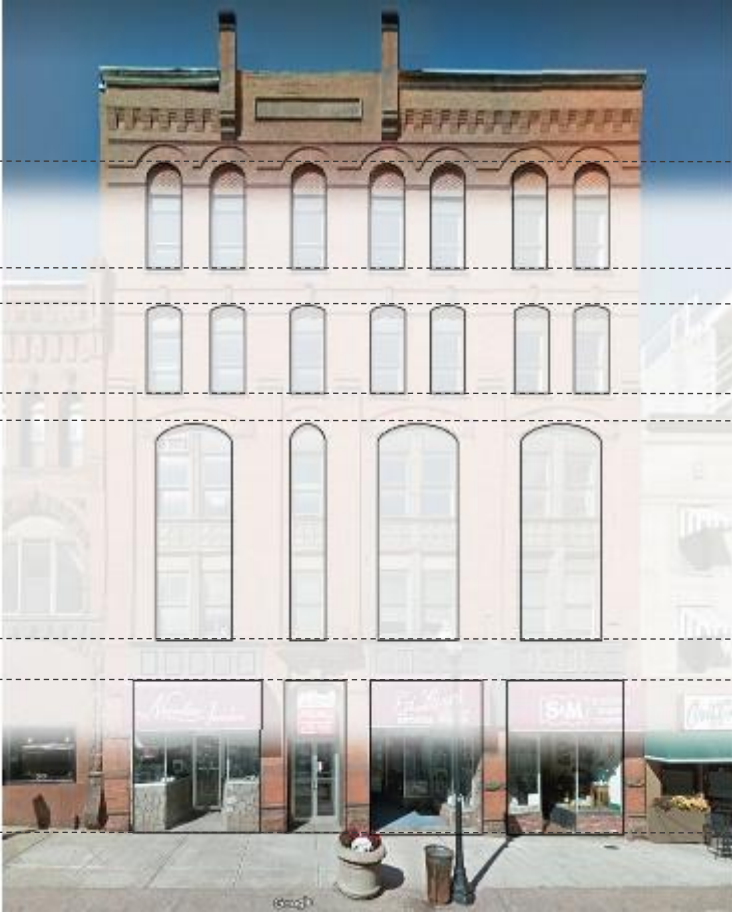


CONTEXT STUDIES & ANALYSIS

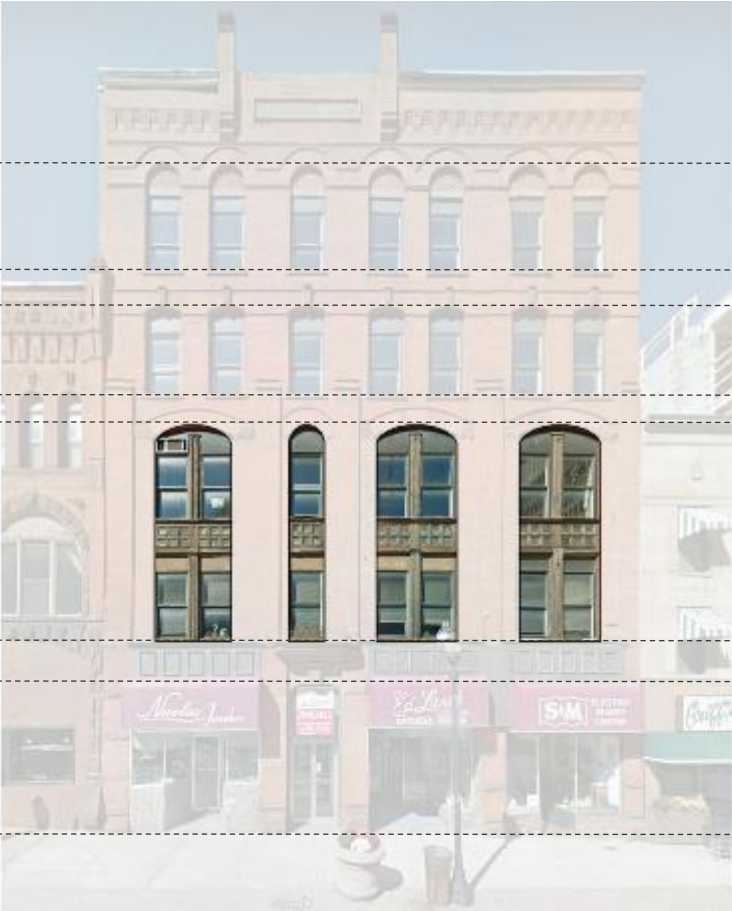
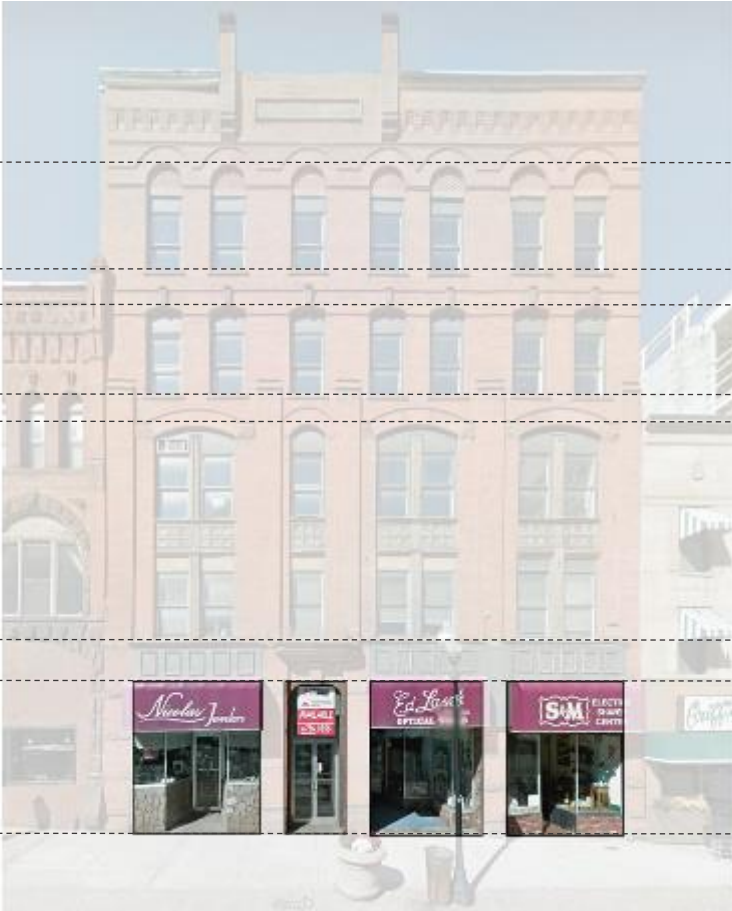




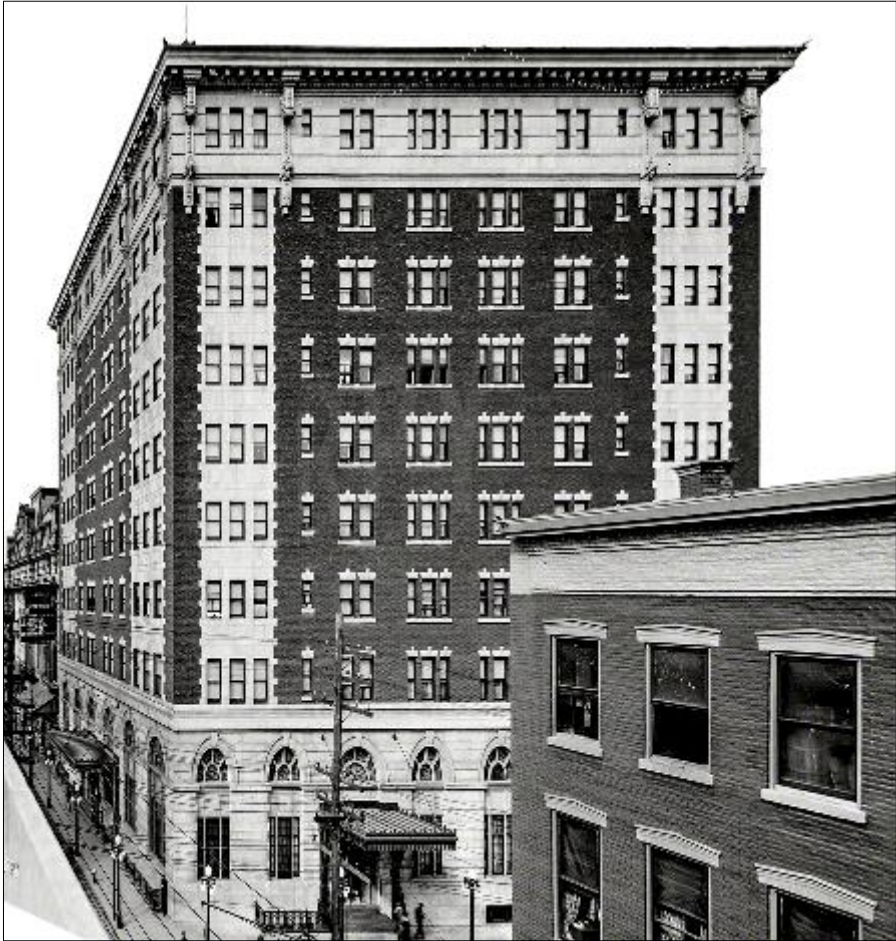
CONTEXT STUDIES & ANALYSIS



CONTEXT STUDIES & ANALYSIS



CONTEXT STUDIES & ANALYSIS: HOTEL UTICA

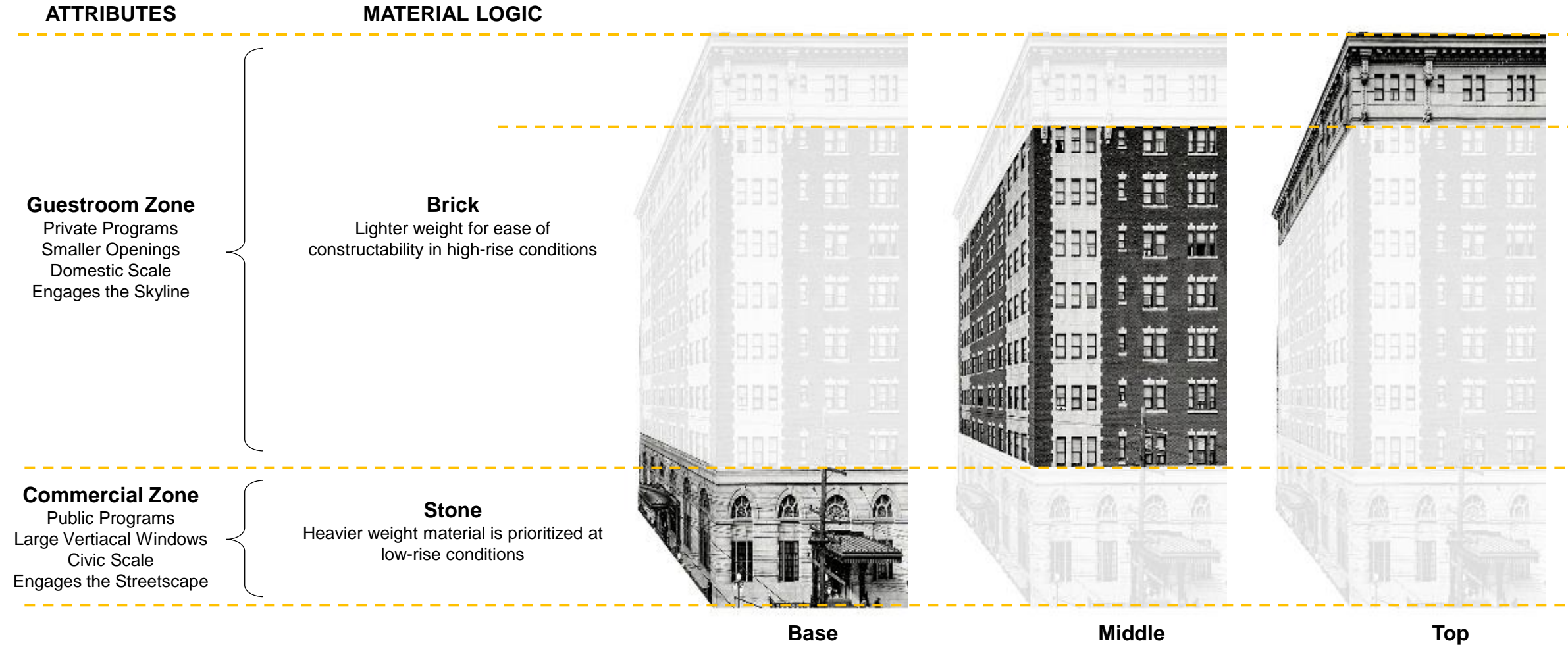




Base

Middle

Top



ATTRIBUTES

MATERIAL LOGIC

Inpatient Tower
Private Programs
Personal Scale
Engages the Skyline

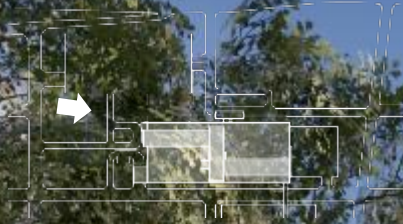
Composite Metal Panel
Lighter weight for ease of constructability in high-rise conditions

Podium
Public Programs
Large Vertical Windows
Civic Scale
Engages the Streetscape

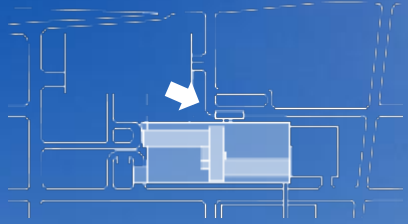
Brick
Heavier weight material is prioritized at low-rise conditions



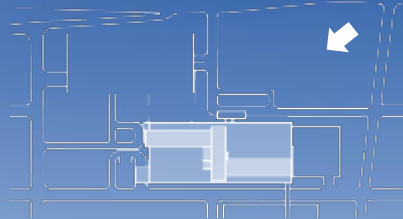
VIEW ALONG LAFAYETTE



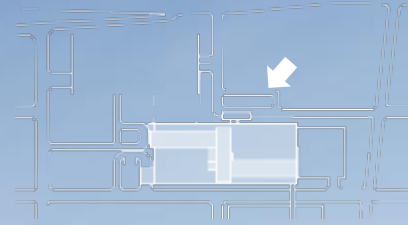
VIEW ALONG LAFAYETTE



VIEW ALONG BROADWAY



VIEW OF MAIN ENTRY LOOKING WEST



MOHAWK VALLEY HEALTH SYSTEM
Utica, New York

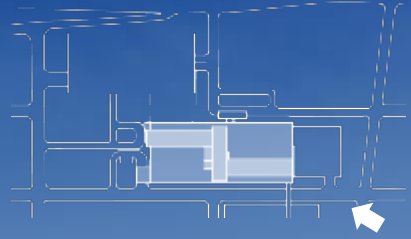
HAMMES COMPANY

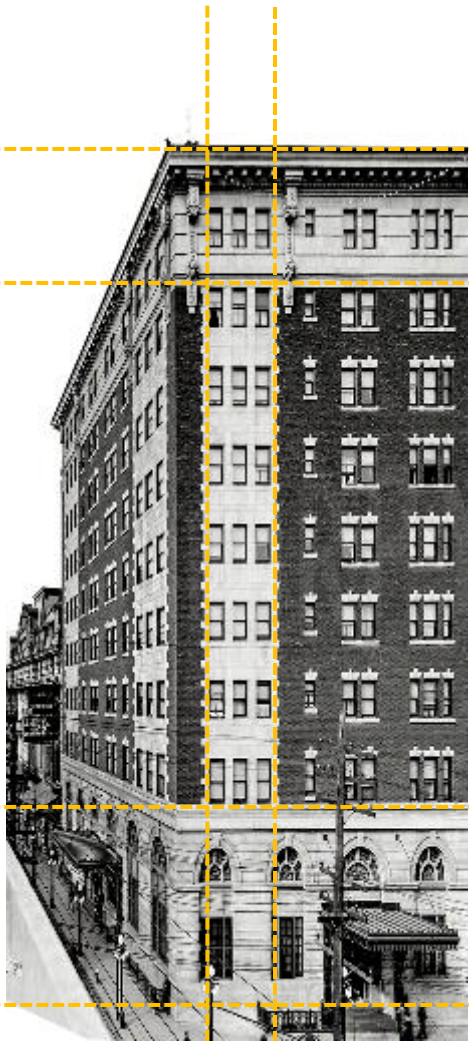
NBBJ

DWYER ARCHITECTURAL

SSR

VIEW ALONG COLUMBIA





THE AUD

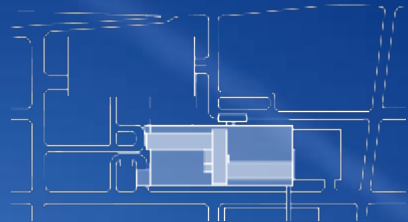
PROJECT SITE

KENNEDY PLAZA





VIEW FROM INTERSTATE 790 RAMP



THE AUD

KENNEDY PLAZA







MOHAWK RIVER VALLEY

DESIGNING FOR INTEGRATION OF NATURE AND PARK-LIKE OPPORTUNITIES



Careful consideration of street/campus lighting, security, parking, pedestrian walkways, etc.

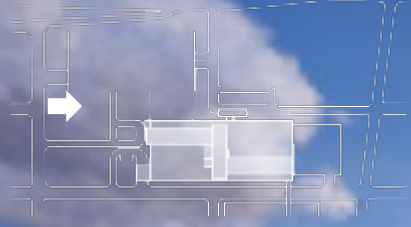
Campus designed for walkability. Transit access on Broadway and adjacent to regional Rayhill Memorial Trail .



Shape of tower enables scenic patient views of the hills to the north and the skyline to the south.

Incorporating Park-like areas, tree lined walks, green infrastructure, etc.

VIEW FROM LAFAYETTE PROMENADE



#mvhsdowntown

Share the excitement!

