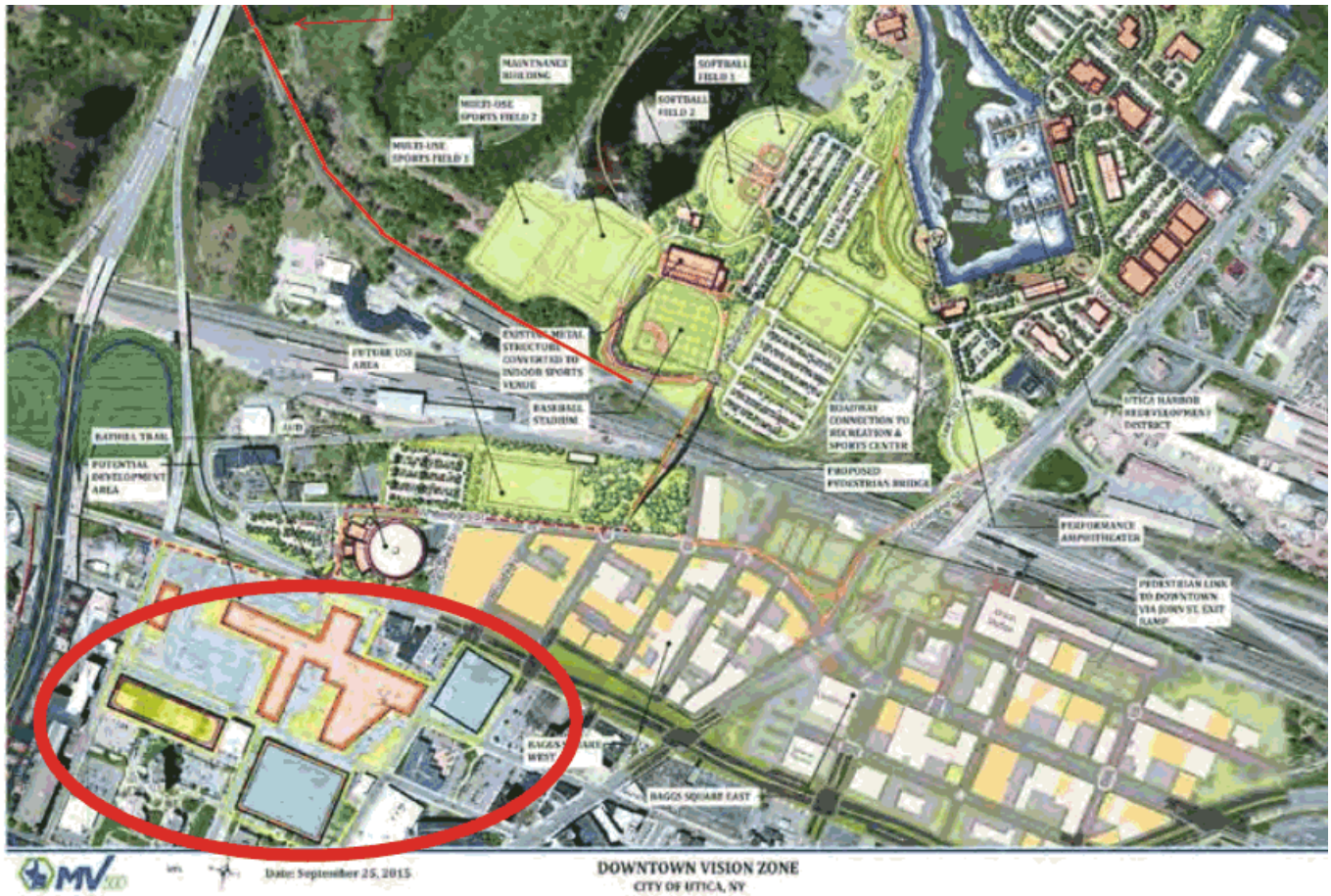


Start: Spring -Summer 2015 - Jim Brock hears from one, two and then a third MVHS Board Member; there's a plan shaping-up to place the new hospital into Downtown Utica. Jim starts a Facebook Group on August 22, 2015, calls various people including Brett Truett. Jim appears on the radio, and very soon the media and the Utica OD start coverage of Jim's and Brett's questioning.

Map 1: September 23, 2015 - The Utica OD carries a story and map of downtown hospital area. Story reports a 34-acre parcel; however the land area shown is just 12.5 acres.



Map 2: October 2015- In a document titled, “Mohawk Valley REDC Upstate Revitalization Investment Prospectus”, used for the “MV500”, #NoHospitalDowntown finds the following illustration (page 137),



Sadly the document incorrectly labels the Columbia Lafayette Neighborhood as “functionally obsolete” and “crushing blight”. The public wasn’t shown this illustration, nor has the media used it.

https://www.ny.gov/sites/ny.gov/files/atoms/files/MVREDC_URI_FinalPlan.pdf

https://www.youtube.com/watch?time_continue=1&v=nyUTrQeq0vY

<https://twitter.com/MohawkValley500>

Map 3: April 3, 2016- The UticaOD runs a story with this illustration, which indicates the proposed hospital will use the entire Utica police and City court campus...



<http://www.uticaod.com/article/20160403/NEWS/160409937>

Map 4: May 27, 2017- The UticaOD runs story and this newer map regarding the Utica Police Station and City Court parcels relative to the hospitals planned downtown site.

What would a hospital replace?

There are roughly 20 businesses and companies and three nonprofits within the proposed 17-acre site where a downtown hospital could go. Those businesses and nonprofits could be forced to move if a hospital does come. It isn't clear yet, however, if the Utica Police Department and its vehicle maintenance garage will be impacted. Here's a look at what's in the neighborhood

- Proposed hospital site
- City-owned property



- | | | | |
|---|--|---|---|
| <ul style="list-style-type: none"> 1. Bengee's 2. Clemente Novelties 3. Empty 4. Teaser's II 5. Former Morehouse Appliance 6. DataFlow 7. Former FotoFair 8. Urban Renewal Agency property 9. Norm Seakan Appliance 10. The Salvation Army 11. Empty 12. Turning Point Church | <ul style="list-style-type: none"> 13. Pete's Auto Parts 14. Elite Envy Salon & Spa 15. Plaza Deli 16. Kelly's Closet 17. Urbanik's 18. Residence 19. Part of UAP Engine Rebuilding 20. John Bosco Greenhouses 21. John Bosco House 22. U.A.P. Engine Rebuilders 23. Residential 24. Residential | <ul style="list-style-type: none"> 25. Residential 26. ABC ChemDry 27. Citation Services 28. Former Repo Gotta Go 29. Schmalz Mechanical Contractors 30. Labor Ready 31. Wilcor International 32. Fisher Auto Parts 33. Dacobe 34. Metzler Printing 35. Owned by Clemente 36. Owned by Clemente | <ul style="list-style-type: none"> 37. Owned by Clemente 38. Utica Police Garage 39. Utica Police Station 40. Utica City Court 41. H.J. Brandeles Corporation 42. North Country Books 43. 401 Columbia Place 44. Danovits Center for Equality 45. O'brien Plumbing 46. Dental Systems Group 47. Urbanik's 48. Maugerles Auto Body |
|---|--|---|---|

<http://www.uticaod.com/news/20170527/will-hospital-impact-utica-police-station>

<http://www.uticaod.com/storyimage/NY/20170527/NEWS/170529564/EP/1/1/EP-170529564.jpg>

Map 5: July 2017- A “secret document” shared by MVHS and MV EDGE with Common Council shows the following illustration...



<http://www.nohospitaldowntown.com/pdfs/mvhs-july-27-2017.pdf>

Map 6: August 10, 2017- WRVO Public Radio runs a story and finally the full study area is published. They use an interactive Google map (see story link under image below), which is based off a little-known NYS “CRIS” map. However neither the story nor these maps are widely available to Utica-area residents.

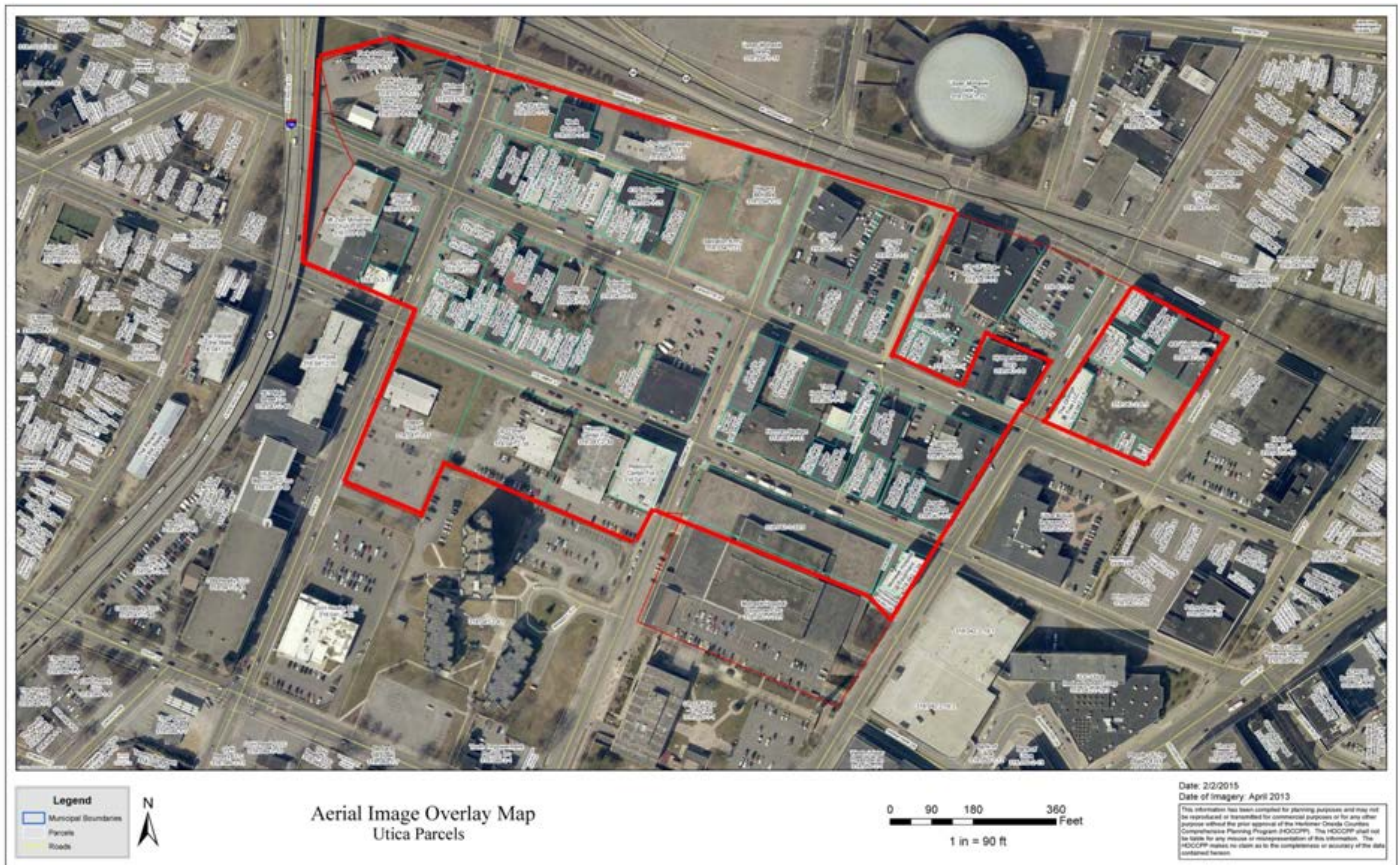


<http://wrvo.org/post/downtown-utica-hospital-could-relocate-dozens-businesses>

<https://cris.parks.ny.gov> (Search their database for Project Number: 16PR06600)

The UticaOD finally offers this map in their story here <http://www.uticaod.com/news/20170920/utica-medical-campus-footprint-comes-into-focus> on September 20th.

Map 7: (Dated February 2, 2015)- Another MVHS PowerPoint with partial titled “SECON”, was sent to #NoHospitalDowntown in Mid-September of 2017. This document shows the illustration below with two “red lines”, a heavy and thin line. The thin line includes the Utica Police Station and City Court, a greater portion of the City Hall parking garage, and adds question of the western edge as well. Note with the new Route 5/8/12 more acreage is brought into question.



<http://www.nohospitaldowntown.com/ppt/mvhs-new-hospital-planning-secon.pptx>

The main Utica newspaper, the UticaOD, has **done very little** to show the public the full and true potential impact area of a downtown hospital concept. Why? Hospitals require a great deal of space; they always seem to always expand into neighborhoods - as Utica has seen with all three current hospitals. How can the community understand the true impact of any initial concept, and future impact, if complete information is withheld as it has been?

MVHS, and MV EDGE, touted their concept as a “health or medical campus”. However, this language is used to only lessen known negatives. What is proposed is an out of scale, inner-city, hospital district - it would be fully out of character of our Utica’s small downtown.

#NoHospitalDowntown: A diverse Downtown Utica neighborhood is being destroyed by ill-conceived, single use, super block, inner-city hospital district "concept"... 300-400 sick people in beds, 80,000 injured people per year rushing for care, healing patients walking in hallways and on a hospital's downtown grounds? Why stuff all that into downtown, along with 3,000+ parked cars? That is not the energy Utica requires for a livable, walkable, tourist and entertainment attracting Downtown Utica. www.NoHospitalDowntown.com